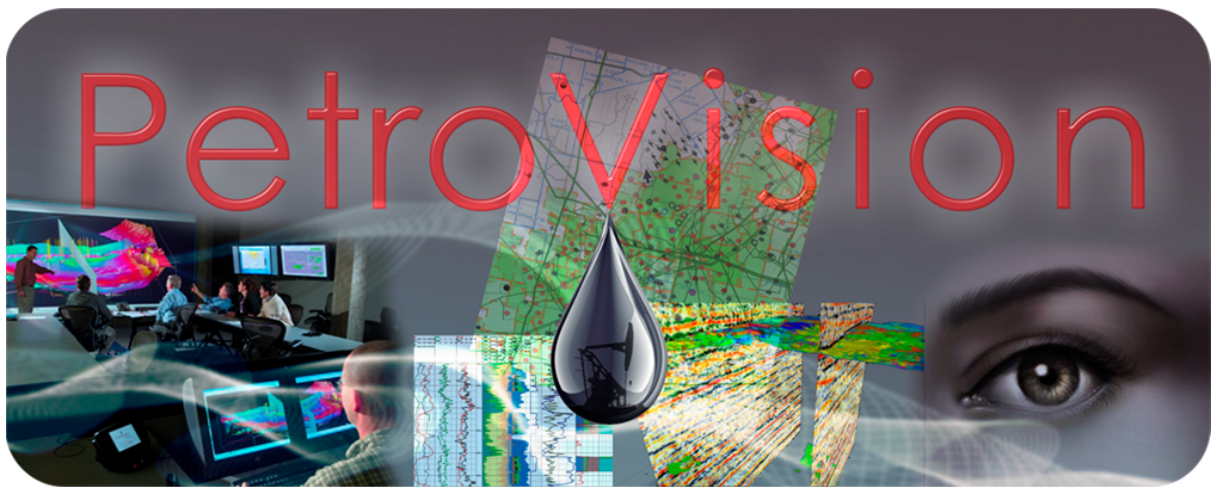


Image Viewer



User Guide

| | |
|---|----------|
| Introduction | 3 |
| Launching ImageViewer | 4 |
| Functionality | 5 |
| Upper control panel | 6 |
| File information | 6 |
| “Settings” dropdown menu | 6 |
| Keep scale for pages | 6 |
| Display image after full loading | 7 |
| Quality settings | 7 |
| Rotate left | 8 |
| Rotate right | 8 |
| Scale | 8 |
| Fit to width | 9 |
| Fit to height | 9 |
| Fit to screen | 10 |
| Buttons for switching between documents | 10 |
| Lower control panel | 11 |
| Information | 11 |
| Page switching | 12 |
| Zoom scale | 12 |

Introduction

ImageViewer application for *PetroVision* is an auxiliary utility for viewing and interacting with images and documents of the following formats (format notation is case insensitive):

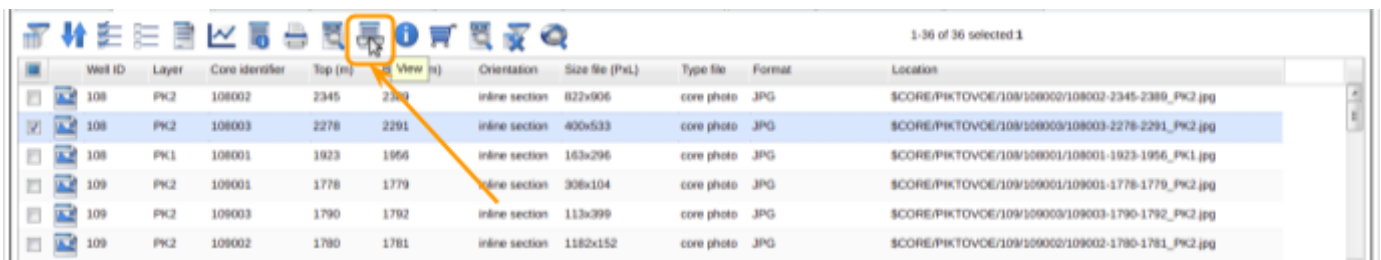
1. Available image formats: *.jpg (.jpeg), .gif, .bmp, .eps, .png, .svg, .tiff* etc.
2. *MS Office* documents: *.doc (.docx), .xls (.xlsx), .ppt (.pptx), .rtf*
3. *OpenOffice* documents: *.odt, .odp, .ods*
4. Graphic documents: *.pdf, .djvu, .ps*
5. Other formats: *.ascii* etc.

Visualization of office documents is based on the *OpenOffice* software package. *ImageViewer* converts them and displays the data in *PDF* format.

You can customize the opening of specific documents or reconfigure the opening for the needs of the user by contacting the support service specialists of Geoleader LLC.

Launching ImageViewer

This application is a utility for viewing documents of the abovementioned formats and is available from the *PetroVision* web application. *ImageViewer* is launched automatically by double-clicking on documents of the specified formats or using the icon:

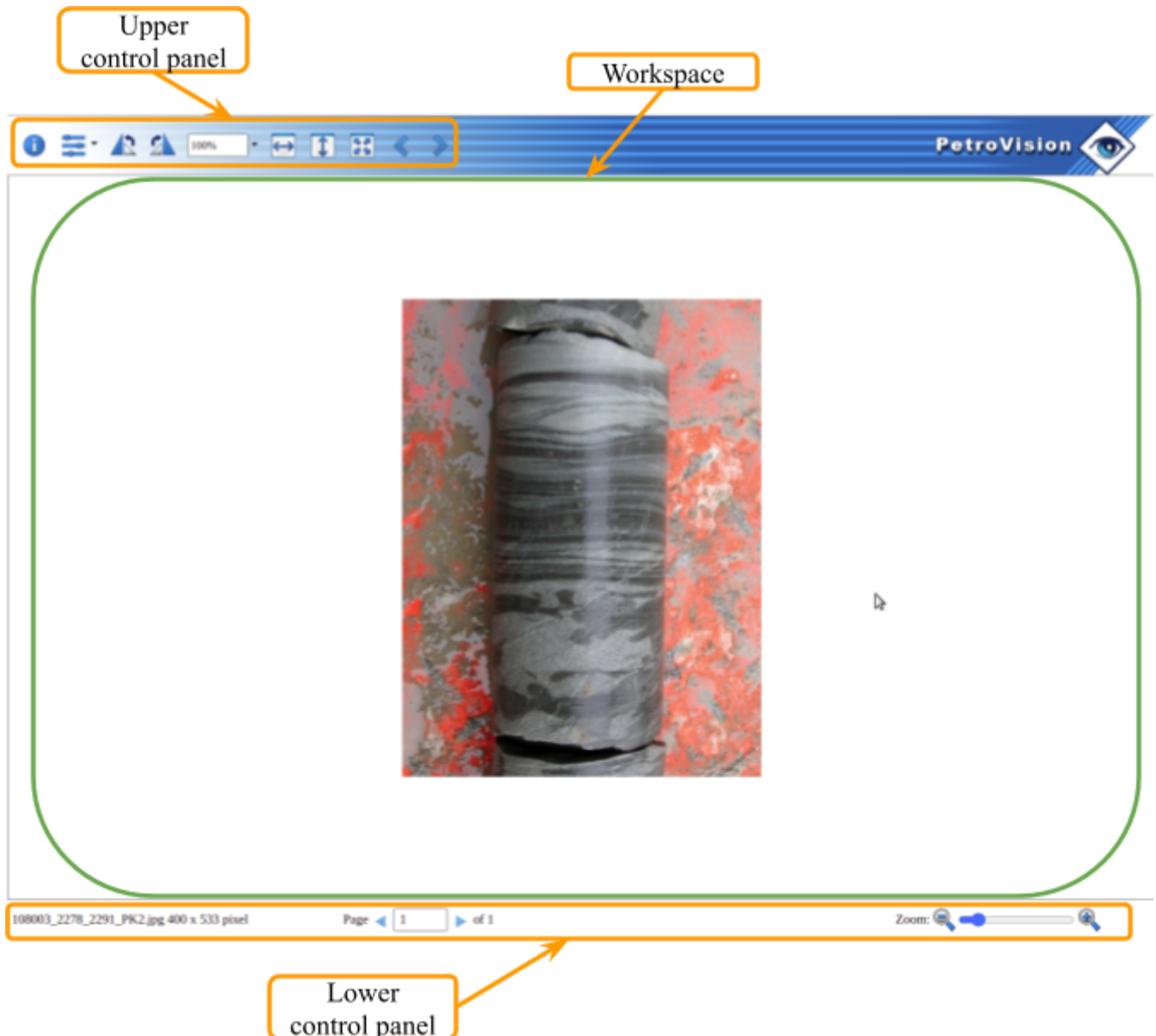


When you try to open several files of the same extension by selecting them, the application will open only the last from this list.

Functionality

The functionality of the *ImageViewer* application includes several blocks:

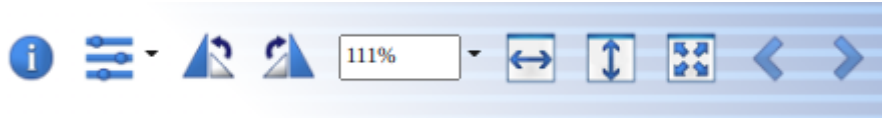
- Upper control panel
- Workspace
- Lower control panel



Below you will find a detailed description of the listed blocks.

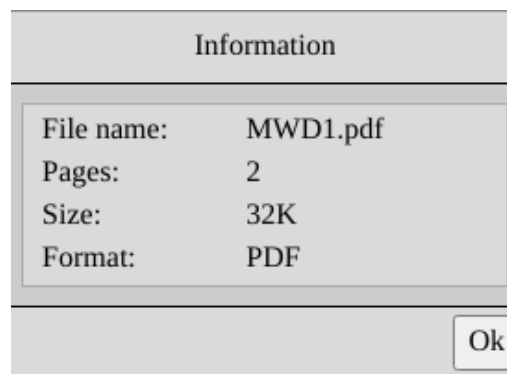
Upper control panel

This control panel is located in the upper left corner of the application. It is represented by the following buttons:

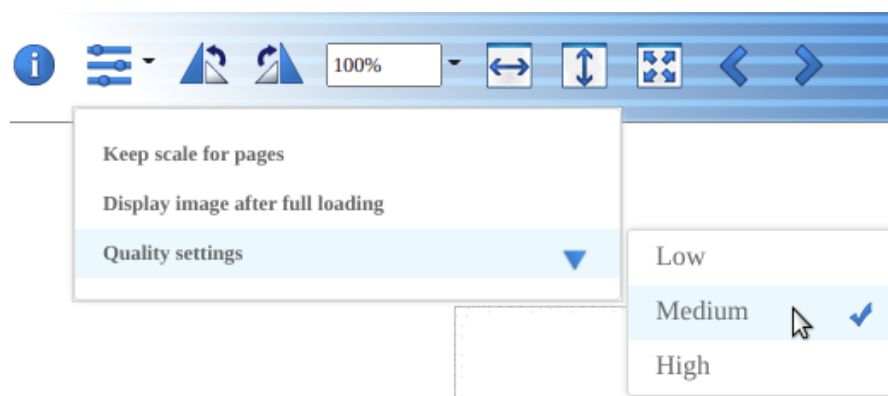


❑ File information

This button shows the number of pages, the name of the source file and its size in bytes, as well as its format.



❑ “Settings” dropdown menu



Keep scale for pages

A checkmark next to this list item means that when switching pages in any way, the previously set scale will be retained.

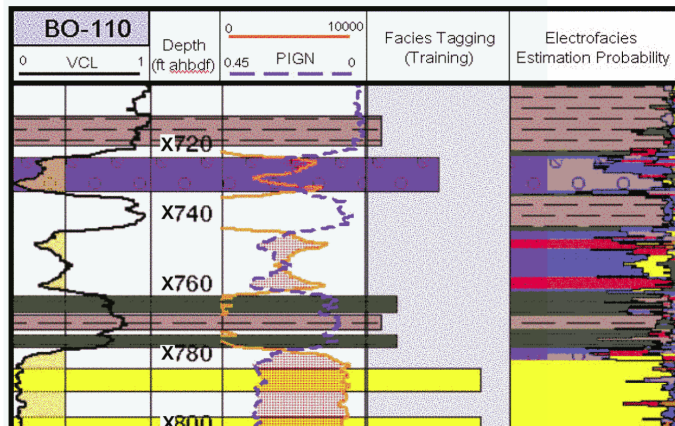
Display image after full loading

When working with a high-resolution image, the application does not show it in full, but renders it in parts as it loads. A checkmark next to this item in the “Settings” drop-down menu means that the application will show the image only when all its parts are loaded.

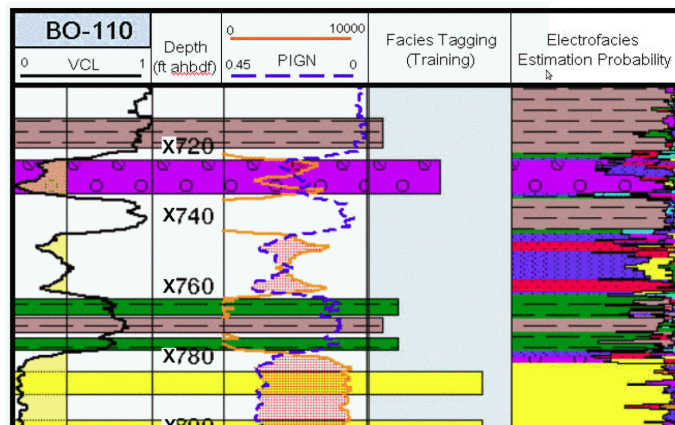
Quality settings

Image quality refers to the number of colors used when rendering an image. The higher the image quality, the more varied the palette used.

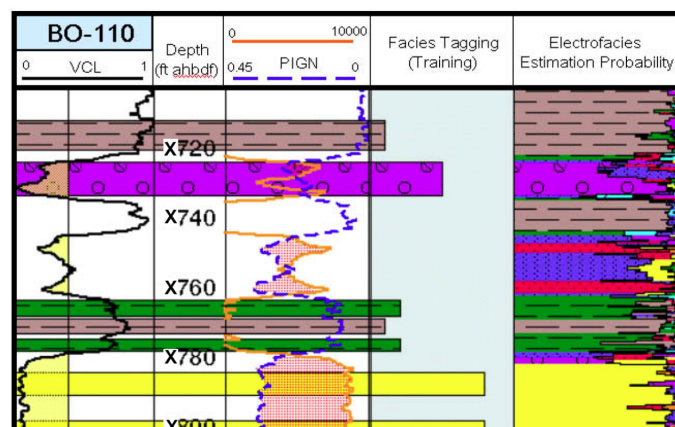
- Low



- Medium

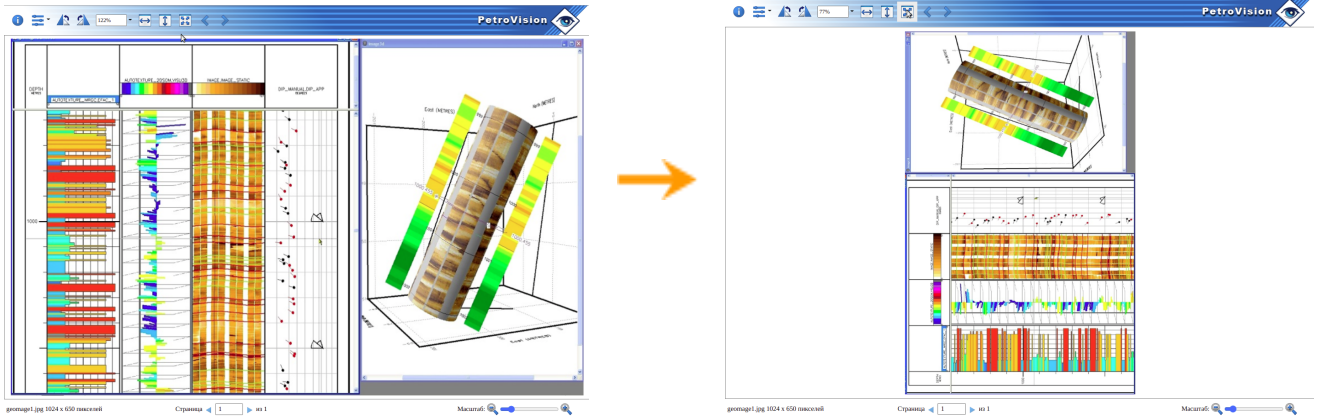


- High



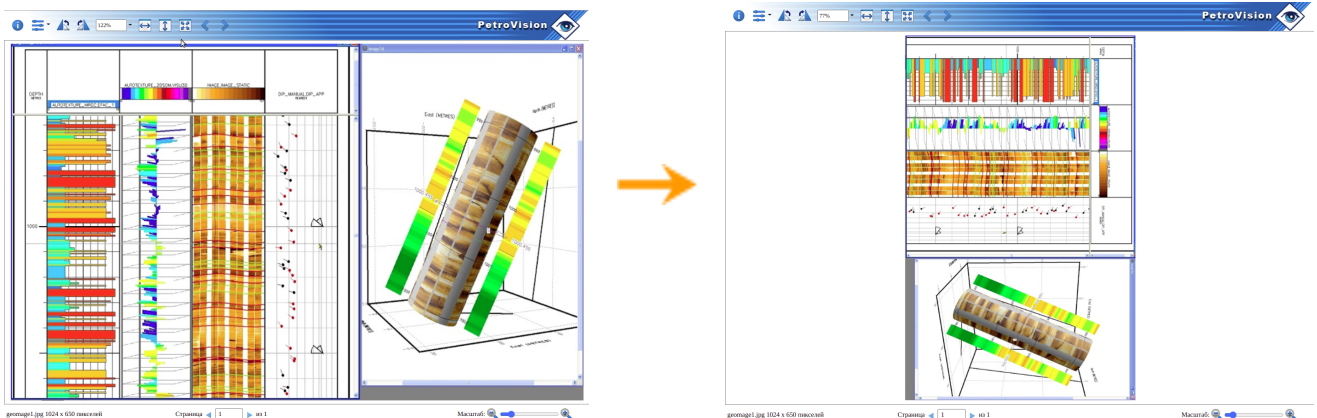
❑ Rotate left

This button allows you to rotate the displayed image 90 degrees to the left.



❑ Rotate right

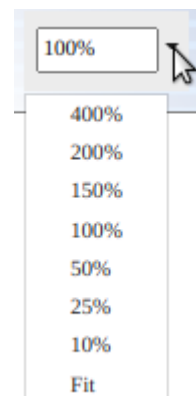
This button allows you to rotate the displayed image 90 degrees to the right.



❑ Scale

The dropdown list of values affects the display scale.

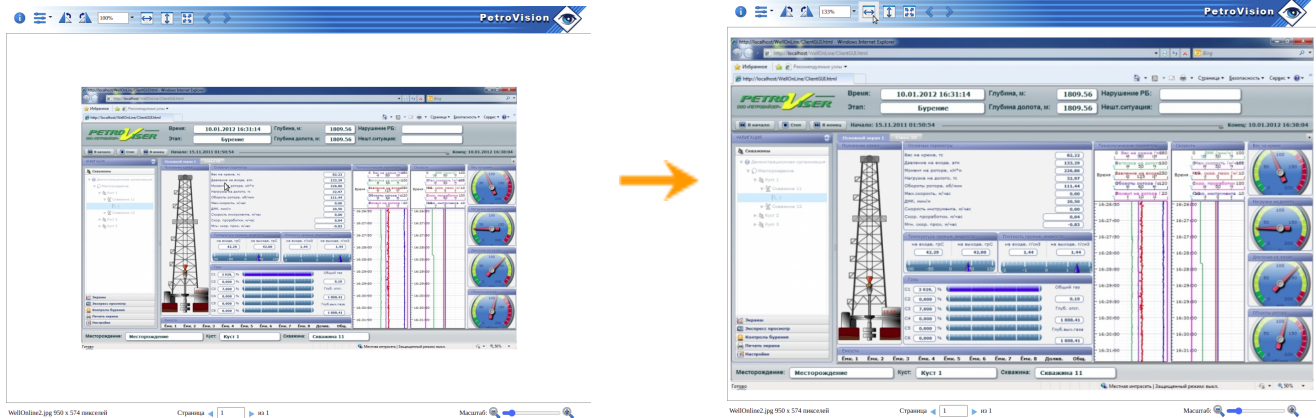
The *Fit* value means that the image will fit into the borders of the browser window.



Fit to width



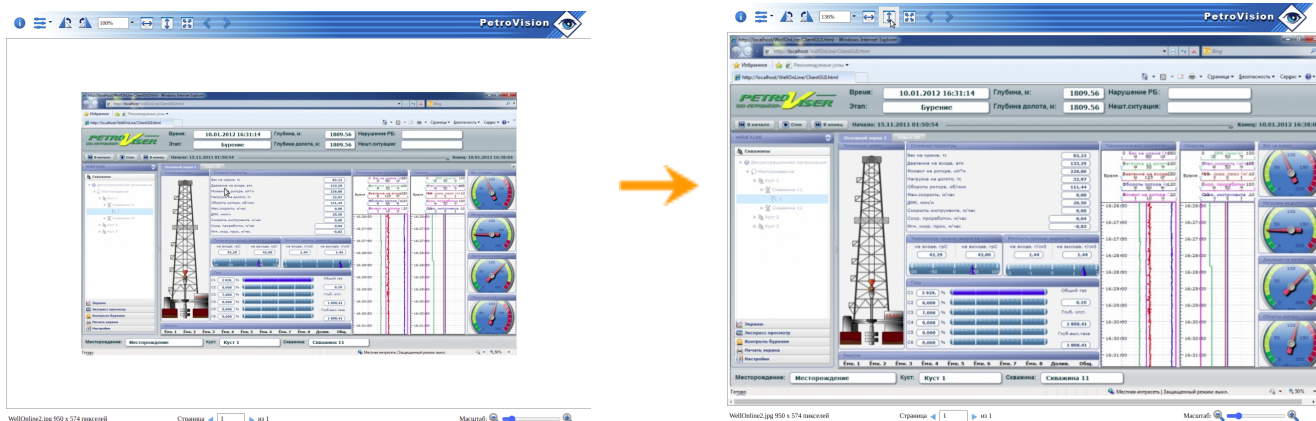
This button allows you to fit the image to the width of the displayed area, regardless of the set scale. The scale value on the upper control panel will be recalculated automatically.



Fit to height

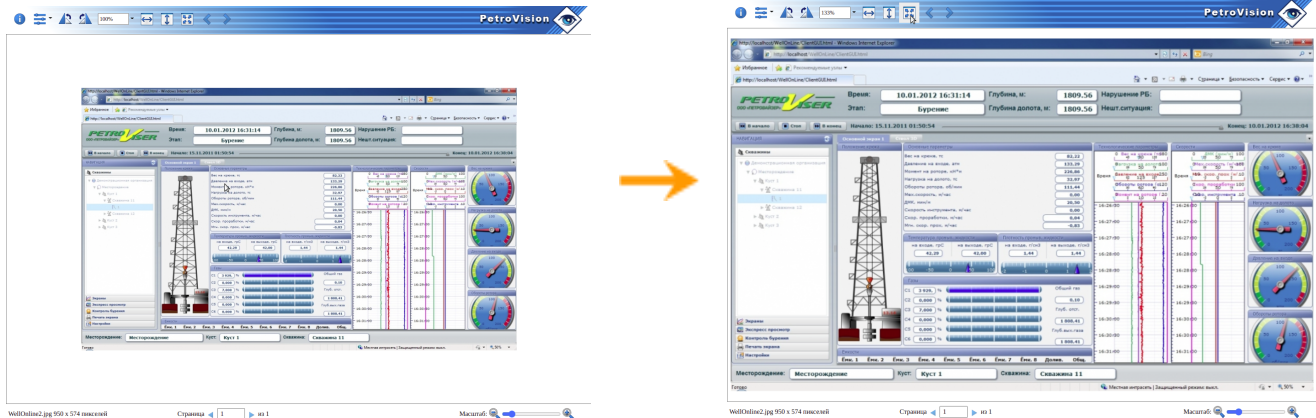


This button allows you to fit the image to the height of the displayed area, regardless of the set scale. The scale value on the upper control panel will be recalculated automatically.





Fit to screen

This button allows you to fit the image to the width and height of the displayed area at the same time, regardless of the set scale. The scale value on the upper control panel will be recalculated automatically.

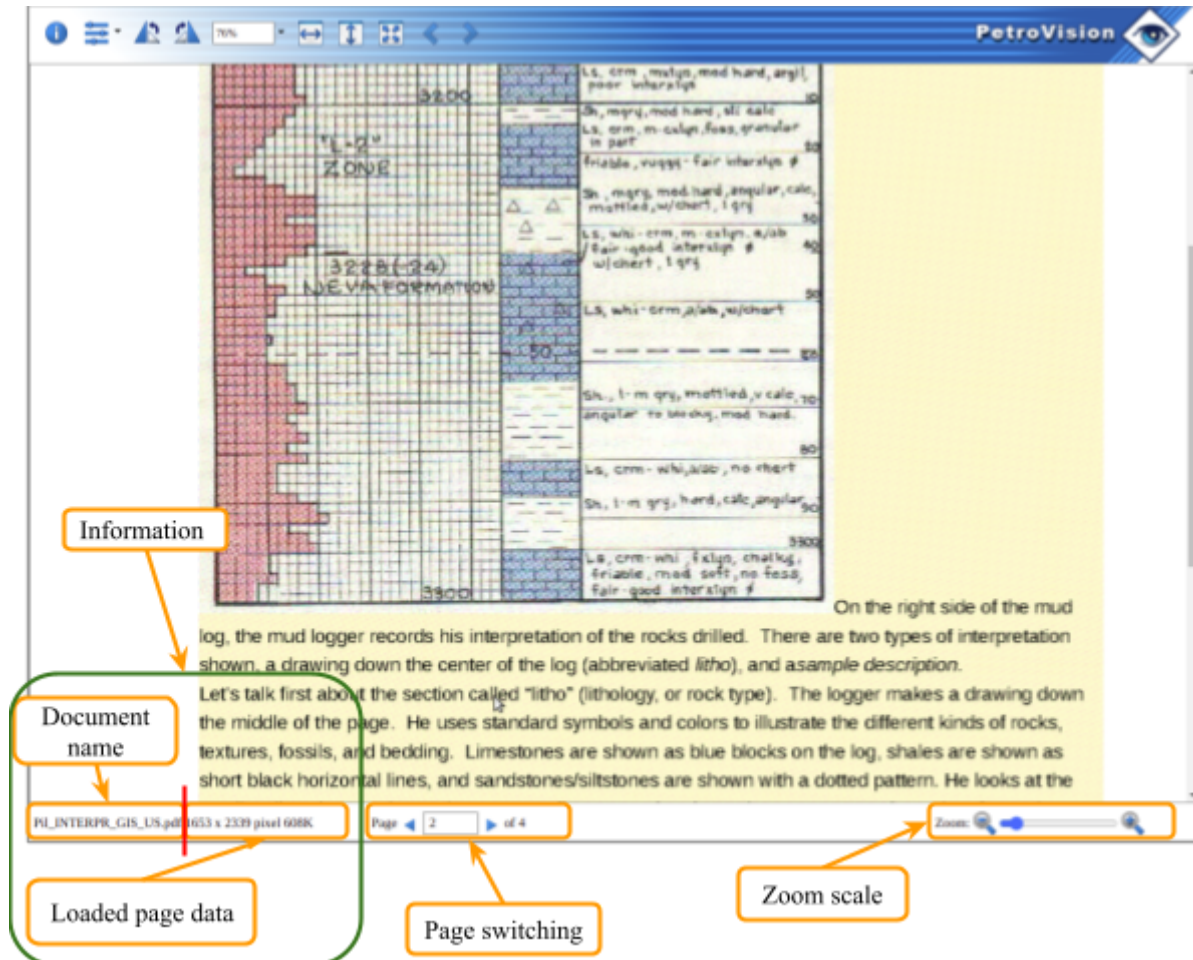


Buttons for switching between documents

The Previous document  and Next document  buttons are available only when the image is opened through the *ArchiveViewer* utility. They allow you to switch between images located in the selected directory.

Lower control panel

It is represented as follows:



Information

The lower control panel includes:

- Document name
- Loaded page data (Image size in pixels and the size of the loaded page on the server, specified in bytes)

When loading a multi-page document, the size of each of the pages is calculated separately.

Page switching

The component shows the number of pages in the document and the number of the current page. Switching pages is performed by pressing the switch buttons.

It is also possible to go to any specific existing page. To do this, you must manually enter the page number and click anywhere in the program or press *Enter*.

Zoom scale

The component allows you to zoom in or out by dragging the slider. The scale value on the upper control panel will be recalculated automatically.