



G E O T O P

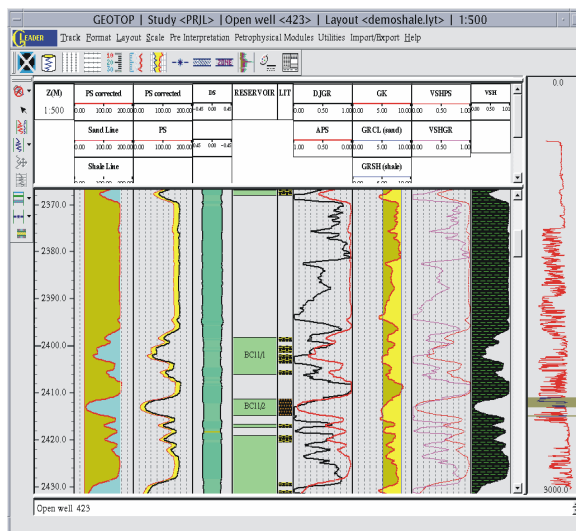
THE PROGRAM PACKAGE IS DESIGNED FOR PROCESSING AND INTERPRETATION OF GEOLOGICAL-GEOPHYSICAL STUDIES IN A BOREHOLE.

MAIN PURPOSE:
LITHOLOGICAL DISJUNCTION OF A WELL SECTION
RESERVOIR LAYER SELECTION
COMPUTATION OF PETROPHYSICAL PARAMETERS

IT MAY BE APPLIED ON THE STAGE OF LOG DATA OPERATIVE INTERPRETATION, AND FOR AREA INTERPRETATION AND RESOURCE CALCULATION.

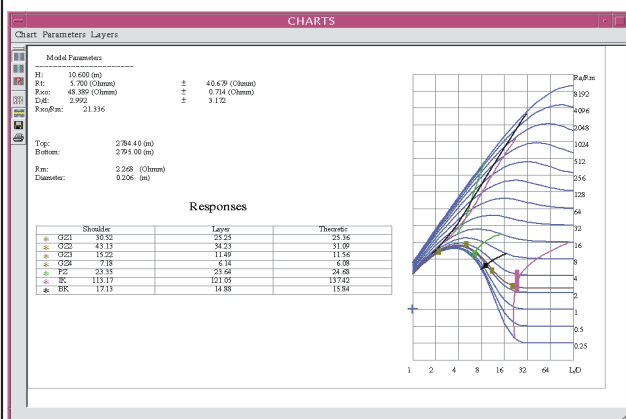
Functional possibilities

- Presence of modules, allowing to realize main procedures, applied in LOG interpretation.
- Graphical interactive mode with data visualization in real time mode.
- Multi-window graphic system, where all the windows are logically connected.
- User program connection without developer interference.
- External setup files to provide user standards.
- Independence on sampling interval and information sizes.
- Independence on units.
- Pointwise and layer-by-layer processing with consideration of section parameters.



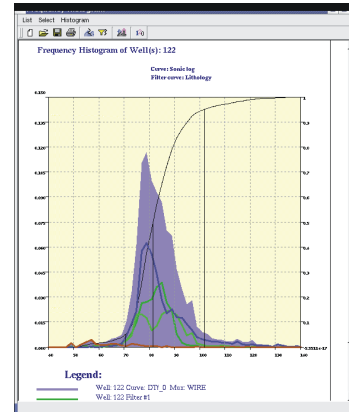
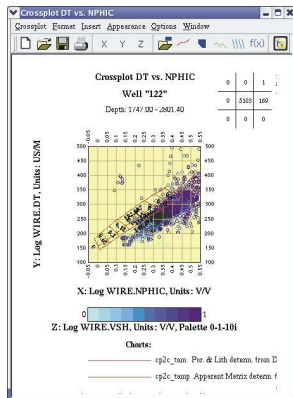
Interpretation

- * Well bore correction.
- * Quality control of electrical logs.
- * Definition of electrical resistivity in pointwise and layer-by-layer modes.
- * Definition of porosity, shaliness, oil and gas saturation by standard algorithms.
- * Calculator, implementing main petrophysical and mathematical dependences.
- * Lithological section disjunction using critical values of parameters.
- * Calculation of reservoir parameter average values for further usage in model creation and resource calculation.



Utilities

- Value display and correction graphically and in a table form.
- Curve filtering.
- Depth matching.
- Curve conversion - compression, expansion, sampling interval modification.
- Curve copy from one set into another.
- Transformation of a continuous curve into interval and backwards.
- Histogram and cross-plot creation.
- Information input from LAS LIS ASCII format files.
- Information output in LAS format.
- Printing and plotting.



Operating systems; Sun Solaris, Linux

For FOREIGN and RUSSIAN WELL LOGS

OOO "Geoleader"
43a Permyakova st.
Tyumen 625051 Russia

Phone +7 (3452) 31 56 07
Fax +7 (3452) 33 79 02
E-mail: dduguet@geoleader.ru